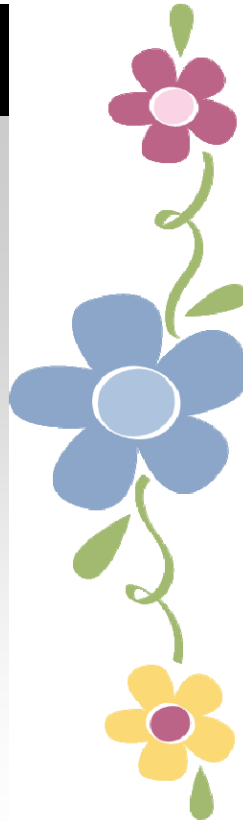


March 2010

# Powder River News

## *INSIDE THIS ISSUE:*

Long Range Planning	1
Faces of the PRCD	2
Radon	3
Promoting Ag in the Classroom	3
Plant Facts	4
Wildlife Escape Ramps	4
Sage Grouse	5
Time is Running Out	5



## *BOARD OF SUPERVISORS*

Amy Icanberry-Chairman

George Renkert-Supervisor

Judy Novakovich-Secretary/  
Treasurer

Jason Williams-Supervisor

Dan Mahoney-Supervisor

## *DISTRICT STAFF*

District Manager-  
Anita Bartlett

## *NRCS STAFF*

District Conservationist-  
Allison McKenzie

## PRCD Begins Long Range Planning

The PRCD wants to hear from you. Every five years the District is charged with the task of developing a new Long Range Plan. This plan becomes the foundation on which our future plans and projects will be based. The PRCD is locally funded and as a local taxpayer we feel you should have an invested interest in our planning process. We would appreciate your recommendations on where the natural resource problems are in the district and how we can work together to solve them. We encourage you to fill out the Long Range Plan Survey that was sent out to you a few weeks ago and return it to us so we can benefit from your opinions.



together to solve them. We encourage you to fill out the Long Range Plan Survey that was sent out to you a few weeks ago and return it to us so we can benefit from your opinions.

It is the intent of the PRCD to send a survey to every household within the District, if for some reason you did not receive one and would like to give us your opinion additional surveys are available at the District office. Please feel free to contact the PRCD office or any of the District Supervisors with questions or comments.

March 2010

## The Faces of the Powder River Conservation District

The Powder River Conservation District is governed by a board of five supervisors. Supervisors are locally elected officials who serve without pay. By state statute three are rural, one is urban, and one is designated as at-large. They are elected to serve staggered four-year terms. These staggered terms improve the stability and consistency for conservation district programs. Supervisors may come from many different occupations. All supervisors must reside within the boundaries of their district and be residents of Wyoming. As a district supervisor, each person serves as a grass roots representative of landowners and the general public, providing leadership and direction in natural resource conservation programs. Upon taking the oath of office, each supervisor agrees to carry out the responsibilities of their position in accordance with the Wyoming Conservation District law (W.S. 11-16-101 through 134).

### PRCD Board of Supervisors



**Jason Williams-At Large Supervisor**

“I grew up on the family ranch north-west of Kaycee and have lived here virtually all of my life. In 2005 I married Radona Vore and we have three children: Marilee, age 3, Nathaniel 22 months, and Elijah 10 months.” 738-2385



**Judy Novakovich-Urban Supervisor**

“My family moved from Nebraska to a ranch west of Thermopolis when I was 4 yrs old. I grew up with an appreciation of conservation and good stewardship practices. I am currently a dental hygienist and work three days a week in Buffalo. I have lived in Kaycee for 4 years and hope that as the urban representative for the PRCD I can help meet some of the wants and needs for conservation programs in our town.” 738-2428



**Amy Icanberry-Rural Supervisor**

“I have lived in Kaycee with my husband Matt, and now 3 children, for nearly 10 years. I was a Wildlife Biologist with the US Forest Service (Buffalo) prior to becoming a Mom, Kettle Corn Vender and Military Wife. When Matt returns from Kuwait in April, I hope to spend more time with the Conservation District, resume making Kettle Corn, and will rejoin our team of EMTs with the Kaycee Ambulance Service.” 738-2104



**George Renkert-Rural Supervisor**

“I grew up in Pennsylvania, where we had dairy cows and some cropland. After getting my Ag Economics degree and starting a fencing company, I did some construction work and was employed by the Chicago Board of Trade. My family and I moved to Kaycee nearly 10 years ago and I now manage the Middle Fork Ranch.” 728-2699



**Dan Mahoney-Rural Supervisor**

“I grew up east of Newcastle, WY on my families ranch and moved to Kaycee in the spring of 1989. I feel Kaycee is a good community and now consider it my home.” 738-2682



### PRCD Staff



Anita Bartlett has been the District Manager for the Powder River Conservation District for the past 4 years. Anita received her Bachelor's of Science Degree in Range Management with options in Range Livestock Production and Rangeland Business from Chadron State College in 2005. She currently serves as the Secretary for the Wyoming Conservation District's Employee Association.

March 2010

## RADON

Radon is a colorless and odorless gas, and therefore not detectable by human senses alone. It is one of the densest substances that remains a gas under normal conditions and is considered to be a health hazard due to its radioactivity. Radon is not produced as a commercial product. Radon is a naturally occurring radioactive gas and comes from the natural breakdown of uranium. It is usually found in igneous rock and soil, but in some cases, well water may also be a source of radon.

The primary routes of potential human exposure to radon are inhalation and ingestion. Radon in the ground, groundwater, or building materials enter working and living spaces and disintegrates into its decay products. Although high concentrations of radon in groundwater may contribute to radon exposure through ingestion, the inhalation of radon released from water is usually more important.

Radon is a national environmental health problem. Elevated radon rates have been discovered in every state. The US EPA estimates that as many as 8 million homes throughout the country have elevated levels of radon. The Surgeon General has warned that radon is the second leading cause of lung cancer in the United States today. Some scientific studies of radon exposure indicated that children may be more sensitive to radon. Testing is the only way to know your home's radon levels. There are no immediate symptoms that will alert you to the presence of radon. It typically takes year of exposure before any problems surface.

The average national indoor radon level is 1.3 pCi/L. However, the average indoor radon levels of Johnson County is 4.2 pCi/L. (*One pCi/l means that in one liter of air there will be 2.2 radioactive disintegrations each minute. For example, at 4 pCi/l there will be approximately 12,672 radioactive disintegrations in one liter of air, during a 24-hour period.*) 4.2 pCi/L is also the level EPA has established as the "action level" for deciding to "do something" to do something about radon in your home, school, or workplace.

If you are interested in purchasing kits to test your home or work place for radon, they can be ordered from [www.wyoming.radon.com](http://www.wyoming.radon.com)

---

## PROMOTING AGRICULTURE IN THE CLASSROOM

This school year the PRCD would like to remind all teachers and youth groups to take advantage of our Wyoming Ag in the Classroom Tool Chests. Some of the topics covered in the chests are: animal identification, grazing, birds, bugs, soils, fire, geology, trees, mapping, mammals, water quality, weeds, landscaping, and journaling. If you are interested in what the tool chest has to offer stop by and see us. Materials are available at all times. **As well, feel free to contact the PRCD if you would like us to assist you in any of your Ag related activities. We are always more than willing to come to your classroom or meeting to help in any way that we can.**



March 2010

## PLANT FACTS

**Common Name:** Blue penstemon

**Species:** *Penstemon glaber* Pursh

**Life Span:** Perennial

**Origin:** Native

**Season:** Cool

**Growth Form:** forb (15-80 cm); erect to ascending from a woody caudex; flowers June to September, seeds mature August to October, reproduces from seeds.

**Vegetative Characteristics:**

**Leaves:** opposite, simple; basal leaves wanting or highly reduced, apex acute to obtuse, margins entire; glabrous

**Stems:** 1 to many, stout, glaucous



**Floral and Fruit Characteristics:**

**Inflorescences:** panicle; flowers in 5-12 clusters, congested, each floral cluster with 2 to 4 flowers.

**Flowers:** perfect, bilabiate; calyx lobes 5, rounded or short-acuminate, margins scabrous, glabrous to puberulent; corolla bluish-purple or rarely pink, pale internally and lined on the interior with reddish-purple nectar guides, lobes rounded; sterile filament bearded

**Fruits:** capsules; 2-valved, ovoid, thin, pliable, brown at maturity.

**Historic, Food and Medicinal Uses:** Some American Indians made a wet dressing to treat snakebite, others drank tea made from the leaves to stop vomiting; also grown as an ornamental

**Livestock Losses:** may accumulate selenium, but has not been substantiated to cause poisoning

**Forage Value:** fair for mule deer and sheep, becomes less palatable with maturity, worthless for cattle.

**Habitat:** plains, hills, and mountains; most abundant in sandy to gravelly soils.

\*\*\*sited from *North American Range Plants*, Fifth Edition, Stubbendieck, Hatch, Butterfield.\*\*\*

### **FREE WILDLIFE ESCAPE RAMPS FOR STOCK WATER TANKS**

WE HAVE TWO TYPES OF RAMPS AVAILABLE: EXPANDED METAL AND FIBERGLASS. PLEASE CONTACT US AT 738-2321 IF YOU ARE INTERESTED IN PLACING THE RAMPS IN YOUR STOCK TANKS.

*March 2010*

**NRCS Offers Sage Grouse Initiative Signup**  
*(Signup Runs Through April 23)*

CASPER, March 19, 2010 – Agricultural producers may submit applications for a new U.S. Department of Agriculture (USDA) initiative that offers financial assistance to enhance sage grouse population and habitat in Wyoming using two conservation programs- Environmental Quality Incentives Program (EQIP) and Wildlife Habitat Incentive Program (WHIP). NRCS administers the EQIP and WHIP programs.

“USDA will work with the U.S. Department of Interior (DOI) to provide certainty to landowners who enroll in NRCS programs to benefit sage grouse,” said Xavier Montoya, NRCS State Conservationist. “This will protect landowners from increased regulation should the bird be listed under the Endangered Species Act (ESA) in the future.”

The initiative is also offered in 10 other western states-California, Colorado, Idaho, Montana, Nevada, North Dakota, Oregon, South Dakota, Utah and Washington. Sage grouse, a bird native to the sagebrush steppe ecosystem of the American West, are found at elevations ranging from 4,000 to more than 9,000 feet and are highly dependent on sagebrush for cover and food.

The sage grouse conservation initiative will help the 11 western states respond proactively to a recent DOI announcement that the greater sage grouse warrants protection under the ESA; however, it will not be listed because of the need to focus on other higher priority species. Because of the DOI decision not to list the sage grouse, landowners will have additional time to be responsive by taking specific actions to protect the species. USDA’s NRCS has been working at the local, state and national levels on behalf of voluntary sage grouse conservation for many years and will intensify efforts in the future.

In Wyoming, because USFWS has emphasized the importance of maintaining large blocks of unfragmented sagebrush grasslands, the primary emphasis will be to improve and maintain existing sage grouse habitat through the design and implementation of grazing management plans that will also enable ranchers to sustain their operations.

Please call or stop by the NRCS Office in Kaycee and visit with Allison regarding this program and application process (307-738-2321). For more information go to <http://www.wy.nrcs.usda.gov/programs/index.html>.

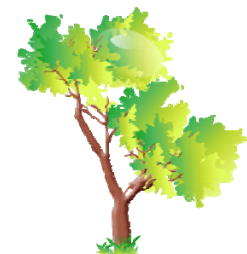
---

**Time is Running Out!!**

The PRCD is still taking tree orders, but time is running out to get your orders in. Seedling tree orders must be turned in no later than Friday, April 9th, seedling trees are due to arrive the afternoon of Tuesday, April 27th. Please do not arrive any earlier than 2:00pm to pick up your seedling tree order.

Large stock tree orders must be turned in no later than Friday, March 26th, large stock trees are to arrive tentatively the week of April 5th. You will be notified as soon as I have a confirmed arrival date.

If you have any questions please feel free to contact the PRCD office at (307) 738-2321.



*Powder River Conservation District  
P.O. Box 48  
Kaycee, WY 82639*

Non-Profit  
U.S. Postage  
PAID  
Kaycee, WY  
Permit #1

Mark Your  
Calendars!!!

PRCD Board Meeting– April 15th @ 4pm



The PRCD is an equal opportunity employer.

Find us on the web: [www.powderrivercd.org](http://www.powderrivercd.org)