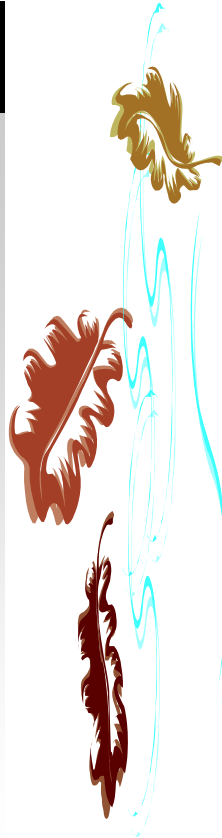


September 2010

# Powder River News

## INSIDE THIS ISSUE:

Women in Ag	1
Farm Bill Programs	2
WNRF Raffle	2
Preparing for Winter	3
Promoting Ag in the Classroom	3
Plant Facts	4
Public Notice	4
PRCD Accomplishments	5



### BOARD OF SUPERVISORS

Amy Icanberry-Chairman

George Renkert-Supervisor

Judy Novakovich-Secretary/  
Treasurer

Jason Williams-Supervisor

Dan Mahoney-Supervisor

### DISTRICT STAFF

District Manager–  
Anita Bartlett

### NRCS STAFF

District Conservationist-  
Allison McKenzie

Rangeland Management  
Specialist-Johnna Blankenship

## 17<sup>th</sup> Wy Women’s Ag Symposium

Dedicated to founding member Anne Miles, the 17<sup>th</sup> Annual Wy Women’s Ag Symposium will be Nov 11<sup>th</sup> and 12<sup>th</sup> at the Ramada Plaza Riverside in Casper.

Nov 11<sup>th</sup> at 6:00pm, the free evening session features Lisa Shepperson Garnhart, who participated in the movie *Code of the West*. She will discuss the principles expressed in the movie, and the proud ranching culture and Wyoming lifestyle we all live. Then she puts on her Legislator’s hat and speaks about upcoming legislative issues of interest. Discussion and questions are encouraged.

Cora Rose and Laurie Wood will entertain us and we will have appetizers and drinks.

Nov 12<sup>th</sup> at 9:00am, Keynote address, “*Even the Longest Day is Only 24 Hours Long*”, speaker Cathy Vasko of Torrington will present approaches to getting the most out of a busy woman’s day. We’ll explore ways to survive a great day, a miserable day, a busy day or a lazy day. Maintaining a sense of humor in difficult times is the key. Another session by Cathy is “*Different Strokes for Different Folks*”.

Breakout speakers include Kaycee super gardener Nancy Schiffer “Gardens Made for Wyoming”, Pearley Wells “Financial Advice”, Matt Young “Digital Photography”, Garijo Brierly “Decorating on a Budget” and Dallas Mount “Putting Profit into the Ranch”.

Our website, [www.wywomeninag.org](http://www.wywomeninag.org), will have registration information or call 307-235-940, \$20 until Nov 5<sup>th</sup>, then \$25.



*September 2010*

## **NRCS Accepting Applications for Farm Bill Programs**

CASPER, September 3, 2010 – Agricultural producers may submit applications for seven different Farm Bill conservation programs, administered by USDA’s Natural Resources Conservation Service (NRCS). Applications received at Wyoming NRCS field offices, through October 29, 2010, will be compiled and ranked for 2011 funding.

“These seven programs offer a great variety of opportunity, and producers will probably find a fit for their individual resource needs and goals,” said Jay Mar, assistant state conservationist for programs. “Applications are accepted on a continuous basis; however, the deadline for this round of funding is October 29, 2010. Applications received after that date will be deferred for future funding.”

Private landowners are encouraged to sign-up for the Environmental Quality Incentives Program (EQIP), the Wildlife Habitat Incentives Program (WHIP), the Agricultural Management Assistance (AMA) Program, the Wetlands Reserve Program (WRP), the Grassland Reserve Program (GRP), and the Farm and Ranch Lands Protection Program (FRPP). Applications on file that were not selected for contracts in 2010 may be carried-over. However, applicants should contact the local office if they wish to maintain or change their application.

The conservation programs offer financial incentives and technical assistance for a variety of conservation practices available to private landowners who wish to voluntarily participate.

If you have any questions or would like to pick up an application please contact the Kaycee NRCS Field office at 350 Nolan Avenue or call (307) 738-2321.

*The U.S. Department of Agriculture (USDA) prohibits discrimination in all its programs and activities on the basis of race, color, national origin, age, disability, and where applicable, sex, marital status, familial status, parental status, religion, sexual orientation, genetic information, political beliefs, reprisal, or because all or a part of an individual's income is derived from any public assistance program. (Not all prohibited bases apply to all programs.) Persons with disabilities who require alternative means for communication of program information (Braille, large print, audio-tape, etc.) should contact USDA's TARGET Center at (202) 720-2600 (voice and TDD). To file a complaint of discrimination write to USDA, Director, Office of Civil Rights, 1400 Independence Avenue, S.W., Washington, D.C. 20250-9410 or call (800) 795-3272 (voice) or (202) 720-6382 (TDD). USDA is an equal opportunity provider and employer.*



## **Wyoming Natural Resource Foundation Raffle**

Your \$25 tax deductible donation to the WNRF enters you in a drawing to win:

**1st place**– 2010 Yamaha Grizzly 450 ATV

**2nd place**-121 piece NAPA tool set

**3rd place**-Cabela’s Deluxe Backwoods 3-room cabin tent

This drawing will be held on November 18 in Worland at the WACD/WNRF state convention. **ONLY 600 TICKETS** will be distributed. To get your ticket stop by the PRCD Office at 350 Nolan Avenue in Kaycee.



## PREPARING FOR WINTER

As days grow shorter and nights cooler, it becomes clear-winter is almost here. Are your perennial plants ready? If not, here are a few helpful tips to get you ready.



**Roses:** Prune canes back to 10-12 inches and mulch the plants. Hardy shrub-type roses do not need fall pruning.

**Bulbs:** Gladiolus, dahlias, some lilies and other tender bulbs won't survive winter. Dig them up and store them in a cool dry place. Tulips, narcissus, and other hardy bulbs can be planted until you can't get through the soil to get them in the ground. In fact, it's actually better to plant them later, rather than earlier, as they can sometimes break dormancy if the wrong weather patterns occur.

**Autumn Lawn Care:** Tree leaves are a major hindrance to proper grass growth, if they get too thick on your lawn, they can actually kill even a healthy turf by not allowing the grasses to store enough energy for winter survival and proper dormancy. You should also trim any grass that does not normally get cut. Especially around tree trunks, shrubs, and perennials. Longer grass provides shelter for mice, which will make wintertime meals of the bark on such plants.

**Trees:** If you have young trees, protect the trunks from rodent and rabbit damage with hardware cloth. Tree wraps can also be used to protect the trunks of young and smooth-barked trees from winter sun injury, but the tree wraps need to be taken off in the spring. Winter sun injury happens when the sun warms and thaws the bark on the southwest side of the trunk. Cold night temperatures then freeze and kill the cells on that side of the tree. To protect the roots of recently planted trees, spread mulch two to four inches deep around the base as the soil freezes.



## PROMOTING AGRICULTURE IN THE CLASSROOM

This school year the PRCD would like to remind all teachers and youth groups to take advantage of our Wyoming Ag in the Classroom Tool Chests. Some of the topics covered in the chests are: animal identification, grazing, birds, bugs, soils, fire, geology, trees, mapping, mammals, water quality, weeds, landscaping, and journaling. If you are interested in what the tool chest has to offer stop by and see us. Materials are available at all times. **As well, feel free to contact the PRCD if you would like us to assist you in any of your Ag related activities. We are always more than willing to come to your classroom or meeting to help in any way that we can.**



## PLANT FACTS

---

**Common Name:** Big Sagebrush

**Species:** *Artemisia tridentata*

**Life Span:** Perennial

**Origin:** Native

**Season:** Evergreen

**Growth Form:** Shrub; erect, highly branched, crown rounded or spreading, trunk short; flowers August to September, reproduces from seeds



**Vegetative Characteristics:**

**Leaves:** alternate, simple; blades narrowly wedge-shaped.

**Stems:** twigs round, rigid, green above, brown below new growth pubescent; bark gray-brown, shredding into long flat strips.

Other: entire plant aromatic, quite variable in growth

**Floral and Fruit Characteristics:**

**Inflorescences:** heads in narrow, leafy panicles; heads numerous, erect to drooping.

**Flowers:** perfect, heads discoid; involucre in 4-5 series

**Fruits:** achene; obovoid, brownish, flattened, resinous

**Historic, Food and Medicinal Uses:** Wood once used for thatch and firewood, pollen causes hay fever, decoctions used by some American Indians as a laxative.

**Livestock Losses:** volatile oils may cause rumen stasis

**Forage Value:** good for sheep and wildlife on winter range, fair for cattle; high in protein but also high in volatile oils; food source and cover for many kinds of wildlife.

**Habitat:** valleys, plains, basins, and mountain slopes; most abundant in dry, well-drained, gravelly or rocky soils.

\*\*sited from *North American Range Plants*, Fifth Edition, Stubbendieck, Hatch, Butterfield.\*\*

---

### Public Notice

#### Powder River Conservation District

#### Long Range Natural Resource Management Plan

The Powder River Conservation District will accept written comments on the Long Range Natural Resource Management Plan beginning Tuesday, September 7, 2010 and will continue through Thursday, October 21, 2010. Copies of the document are available at the Powder River Conservation District office located at 350 Nolan Avenue, Kaycee, WY 82639 or can be downloaded off our website [www.powderrivercd.org](http://www.powderrivercd.org). For more information contact the Powder River Conservation District at (307) 738-2321.

/s/ Anita M. Bartlett  
PRCD Manager

## PRCD FY 2009-2010 Major Accomplishments

### Administration

- Attended Area and State Meetings
- Attended the Southwest and Pacific Region meeting
- Acted as a cooperating agent to Buffalo BLM Field Office Resource Management Plan revision meetings.
- Attended WDA Supervisor Training
- Attended the WAIC Natural Resource Rendezvous
- Participated in the Local Working Group
- Public Outreach- Publish articles in local newspaper & published 4 district newsletters, continued to maintain & update the district website

### Education

- Adult Education
  - Virtual Weed & Pest Tour
  - Conservation Update
- Youth Education
  - World Water Monitoring Day
  - Adopt A Tree Program the Kaycee Elementary School
  - Ag in the Classroom Activities
  - The Miraculous Seed
  - Transplanting
  - What Is a Mineral?
  - Ice Cream in A Bag
  - Mini Gardens
  - Fifth Grade Field Trip
  - Johnson County 3-4<sup>th</sup> grade Rendezvous
  - Black Hills Natural Resource Youth Camp
  - Johnson County 4-H Science, Engineering and Technology (SET) Day Camp
  - Flower Plantings



### Special Projects

- Household Hazardous Waste Collection Day w/ Lake DeSmet C.D.
- Tree Program
- Russian Olive Removal Project
- Free Well Water Testing Day
- Arbor Day Celebration
- Restored the Bozeman Trail/Welcome to Kaycee Landscape plot
- Donated drip system and weed barrier to the Chris LeDoux Memorial Park
- Installed 3 staff gauges within the Powder River Watershed
- Constructed a Veteran's Memorial in partnership with the Kaycee Auxiliary
- Assisted the Town of Kaycee with planting a small windbreak and the new baseball field



### Water Quality

- Continued Water Monitoring efforts
- Completed the background documentation for a UAA to address site specific criteria for the selenium standard on Murphy Creek

### Rangeland Management

- Worked cooperatively with the Kaycee Stock Trail Users to install a stock water pipeline and tanks on a stock rest just west of Kaycee.

*Powder River Conservation District  
P.O. Box 48  
Kaycee, WY 82639*

Non-Profit  
U.S. Postage  
PAID  
Kaycee, WY  
Permit #1

Mark Your  
Calendars!!!

PRCD Board Meeting– Thursday, October 14 @ 5:30 pm

Public Comment Period ends– Thursday, October 21st



The PRCD is an equal opportunity employer.

Find us on the web: [www.powderrivercd.org](http://www.powderrivercd.org)