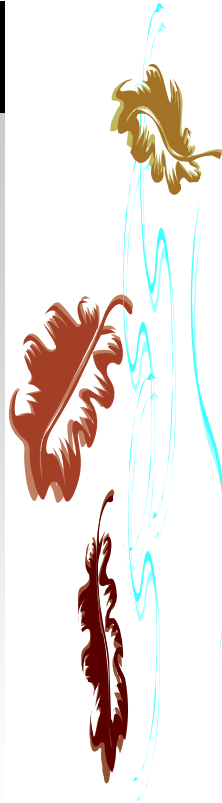


Powder River News

INSIDE THIS ISSUE:

Area I Meeting	1
FY 2010-2011 Accomplishments	2
NRCS Update	3
Plant Facts	4
Wildlife Escape Ramps	4
Cost Share Program	5
Promoting Ag in the Classroom	5
WNRF Raffle	5



BOARD OF SUPERVISORS

George Renkert-Chairman

Bill Jones-Vice-Chair

Amy Icanberry-Secretary/
Treasurer

Dan Mahoney-Supervisor

Kevin Lund-Supervisor

DISTRICT STAFF

District Manager-
Anita Bartlett

NRCS STAFF

District Conservationist-
Allison McKenzie

Rangeland Management
Specialist-Kassie Bales

PRCD Attends Area I Meeting

This year Board Supervisor Kevin Lund and District Manager represented the Powder River Conservation District at the Area I meeting held in Newcastle, WY. At the meeting Anita Bartlett was awarded a pullover jacket for having served the District for five yrs; four other employees were also presented longevity awards. The PRCD would like to recognize Nikki Lohse, District Manager and Dave Fraley, District Supervisor from the Lake DeSmet Conservation District as well, for being named the 2011 Outstanding District Employee and 2011 Outstanding District Supervisor for Area I. Congratulations to you both.



Updates were also given during the meeting by the Wyoming Association of Conservation Districts, Wyoming Department of Agriculture, and the Wyoming NRCS. Through these updates we were amazed to find out that the Wyoming NRCS funded 87.4 million dollars in contracts in the Fiscal Year 2011. Legislators to the Wyoming House and Senate were also on hand to give us an update on bills that could be coming up in this years legislative session. They encourage anyone who has comments or concerns to contact their legislators so that they can make the best possible decision on your behalf.

September 2011

PRCD FY 2010-2011 Accomplishments

Administration

- Attended Area I and WACD State Meeting, and the NACD National Convention
- Acted as a cooperating agent to Buffalo BLM Field Office Resource Management Plan revision meetings.
- Attended the WCDEA Winter Training, Project Learning Tree Training, & the Northern Rockies Tree School
- Participated in the Local Working Group
- Public Outreach- Publish articles in local newspaper & published 4 district newsletters, continued to maintain & update the district website

Education

- Adult Education
 - State Forestry Tree Workshop
 - Xeriscape/Landscaping Workshop
 - Coordination Workshop
 - Putting Profit Back into the Ranch
 - Conservation Update
- Youth Education
 - World Water Monitoring Day
 - Adopt A Tree Program with the Kaycee Elementary School
 - Ag in the Classroom Activities
 - The Miraculous Seed
 - Transplanting
 - What Is a Mineral?
 - Wildlife ID
 - Mapping
 - Johnson County 3-4th grade Rendezvous
 - Black Hills Natural Resource Youth Camp
 - Colonial Day
 - Wyoming Resource Education Days
 - Ecology Camp



Special Projects

- Household Hazardous Waste Collection Day w/ Lake DeSmet C.D.
- Tree Program
- Russian Olive Removal Project
- Free Well Water Testing Day
- Arbor Day Celebration
- Donated weed barrier, trees, and shrubs to Meike Bunkhouse
- Installed a gauging station on the Middle Fork of Powder River with the assistance of the National Weather Service out of Riverton
- Constructed raised flowerbeds at the entrance of the Kaycee Town Park, pruned and planted trees and shrubs within the park.



Water Quality

- Continued Water Monitoring efforts
- Completed the background documentation for a UAA to address site specific criteria for the selenium standard on Murphy Creek
- Completed 17 Recreational UAA site visits in Southern Johnson County and Northern Natrona County for WACD & Wyoming DEQ.

Rangeland Management

- Worked cooperatively with the Kaycee Stock Trail Users to install new gates on the stock trail.
- Started a cost share program to promote conservation practices to conserve our natural resources.



The time of year has come where we are finishing up fiscal year 2011 and getting geared up for fiscal year 2012. NRCS would like to encourage agriculture producers to **submit applications through November 2011**. The programs we encourage you to sign up for include:

Environmental Quality Incentives Program-EQIP provides financial assistance to install or implement structural and management conservation practices. Examples include: increase grazing distribution through fences or water development or improving irrigation systems.

Wildlife Habitat Incentives Program-WHIP provides financial incentives to create high quality wildlife habitat. Examples: riparian area improvements, fish passages, and stream restoration.

Sage Grouse Initiative-SGI provides financial incentives to improve existing sage-grouse habitat by using grazing deferment to improve ground cover. In addition to the incentive payment for grazing deferment there is also the option to install practices that will better help grazing distribution. Examples: stock and wildlife water development and cross fencing.

Wetlands Reserve Program-WRP offers landowners financial assistance to restore and protect wetlands and associated uplands through easements and cost-share only.

Conservation Stewardship Program-CSP offers financial incentives to producers for current conservation practices they already apply to their operation as well as extra incentives to apply more conservation practices.

Farm and Ranch Lands Protection Program-FRPP offers matching funds to assist in getting a conservation easement.

***Please stop by the USDA-NRCS office if you are interested in more information or an application for any of these programs. More information online at: <http://www.wy.nrcs.usda.gov/programs/index.html>

Attention Hispanic & Women Farmers & Ranchers Compensation for Claims of Discrimination

If you believe that the United States Department of Agriculture (USDA) improperly denied farm loan benefits to you between 1981 and 2000 because you are Hispanic or because you are female, you may be eligible to apply for compensation if:

1. You sought a farm loan or farm-loan servicing during that period;
2. The loan was denied, provided late, approved for a lesser amount than requested, approved with restrictive conditions, or USDA failed to provide an appropriate loan service; and
3. You believe these actions are based on your being Hispanic or your being female. In 2011, a claims administrator will begin mailing claims packets to those who have requested one through the Call Center or website. The claims package will have detailed information about the eligibility and claims process.

***If you want to register your name to receive a claims package, access the Hispanic and Women Farmer and Rancher Call Center or Website:

Call Center: 1-888-508-4429

Website: www.farmerclaims.gov

For guidance, you may contact a lawyer or other legal service provider in your community. USDA cannot provide legal advice to you.

If you are currently represented by counsel regarding allegations of discrimination or in a lawsuit claiming discrimination, you should contact your counsel regarding this claims process.

USDA is an equal opportunity provider and employer.

PLANT FACTS

Common Name: Rocky Mountain Juniper

Species: *Juniperus scopulorum*

Life Span: Perennial

Origin: Native

Season: Evergreen

Growth Form: dioecious shrub or small tree; crown rounded to pyramidal, irregular, branching near the ground; pollinates April to May, cones mature October to December of the second year following pollination, reproduces from seeds.



Vegetative Characteristics:

Leaves: opposite or in whorls of 3, scale-like; closely appressed, dark-to yellowish-green.

Stems: twigs slender, scaly; flattened at first, then becoming round.

Cone Characteristics:

Cones: inconspicuous the first year, solitary at tips of branchlets; yellowish-brown.

Mature Cones: berry-like; fleshy, resinous-juicy, bright blue to purplish, mostly two seeded.

Historic, Food and Medicinal Uses: American Indians ate fruits raw or cooked, used as flavorings for meat and gin, fruits and young shoots were boiled for tea, fruits were ground for mush and cakes, wax from berries used in candles; currently used as ornamental, in shelterbelts, for fence post, and fuel; reported to have insect repellent properties.

Livestock Losses: may cause abortion in livestock.

Forage Value: worthless to livestock, generally not consumed; important browse plant for pronghorn, mule deer, and bighorn sheep; birds utilize fruit.

Habitat: ridges, bluffs, canyons, hillsides, and wash areas; often on undeveloped, erodible soils; most abundant on calcareous and somewhat alkaline soils.

sited from *North American Range Plants*, Fifth Edition, Stubbendieck, Hatch, Butterfield.

FREE WILDLIFE ESCAPE RAMPS FOR STOCK WATER TANKS

Please contact the Powder River Conservation District at 738-2321 or 350 Nolan Avenue, Kaycee, WY if you are interested in placing Wildlife Escape Ramps in your stock tanks. Currently we only have fiberglass escape ramps available but hope to have expanded metal escape ramps available soon.

September 2011

PRCD Offers Cost Share Programs

The PRCD has two Cost Share Programs available the first is for large rural projects that make a positive difference on the land. This is a cost share program where the PRCD matches 50% up to \$5000, on a reimbursement basis. Projects will be reviewed by staff, then must be approved by the PRCD board before they are initiated. Some examples of projects that qualify under this program are: Solar pumping units, fencing for implementing rotational grazing systems on pastures, or fencing riparian areas to reduce impacts of livestock grazing.

The second cost share program provides incentive for residents and businesses to conserve soil, water and energy. The program also encourages beautification of the landscape. This program matches 50% up to \$1000, on a reimbursement basis. Some examples of projects that qualify under this program are: planting trees and shrubs, xeriscaping to replace traditional lawns, and installation of efficient drip systems for trees and shrubs.

For more information on these cost share programs or for an application please contact the PRCD office at (307) 738-2321 or stop by the office at 350 Nolan Avenue, Kaycee, WY.

PROMOTING AGRICULTURE IN THE CLASSROOM

This school year the PRCD would like to remind all teachers and youth groups to take advantage of our Wyoming Ag in the Classroom Tool Chests. Some of the topics covered in the chests are: animal identification, grazing, birds, bugs, soils, fire, geology, trees, mapping, mammals, water quality, weeds, landscaping, and journaling. If you are interested in what the tool chest has to offer stop by and see us. Materials are available at all times. **As well, feel free to contact the PRCD if you would like us to assist you in any of your Ag related activities. We are always more than willing to come to your classroom or meeting to help in any way that we can.**



Wyoming Natural Resource Foundation Raffle

Your \$25 tax deductible donation to the WNRF enters you in a drawing to win:

1st place– 2011 Polaris Sportsman 500 ATV

2nd place–7-Drawer Tool Chest

3rd place–Mossberg 12 Gauge Over-and-Under Shotgun

This drawing will be held on November 17 in Lander at the WACD/WNRF state convention. **ONLY 600 TICKETS** will be distributed. To get your ticket stop by the PRCD Office at 350 Nolan Avenue in Kaycee.



*Powder River Conservation District
P.O. Box 48
Kaycee, WY 82639*

Non-Profit
U.S. Postage
PAID
Kaycee, WY
Permit #1

Mark Your
Calendars!!!

Office Closed-October 10, 2011 for Columbus Day

PRCD Board Meeting- Thursday, October 13, 2011 @ 6:30 pm

WACD Convention-November 15-17, 2011 in Lander



Did You Know?

- ◆ That the PRCD has been serving Southern Johnson County for 56 years.
- ◆ That Pete Meike was the longest serving PRCD Board Supervisor, he served for 42 consecutive years.
- ◆ That the PRCD appreciates the 39 people who have served as District Supervisors.
- ◆ That the PRCD wants to thank everyone for their continued support of all the District's Programs and Activities.

The PRCD is an equal opportunity employer.

Find us on the web: www.powderrivercd.org